



Wiltshire Community Foundation

Meet the Funder
November 2014

What does the Foundation do?

- Makes grants to support the valuable work of the third sector in Wiltshire and Swindon
- Fundraise
- Manages grant programmes on behalf of other funders

Who do we fund?

Third sector organisations -

- Whose work benefits people in Wiltshire and / or Swindon
- Have an independent management structure based in the Wiltshire or Swindon

What will we fund?

- core funding (normal running costs)
- new projects and the extension of existing provision
- training and other development activities that strengthen groups
- equipment
- building work that directly support disabled people

What won't we fund?

- Major capital building projects
- Groups that have more than 12 months running costs in unrestricted reserves
- One-off events or sponsored events

Foundation Grants

To support organisation that are the best at what they do in the county who provide support and services to Wiltshire people who need help the most.

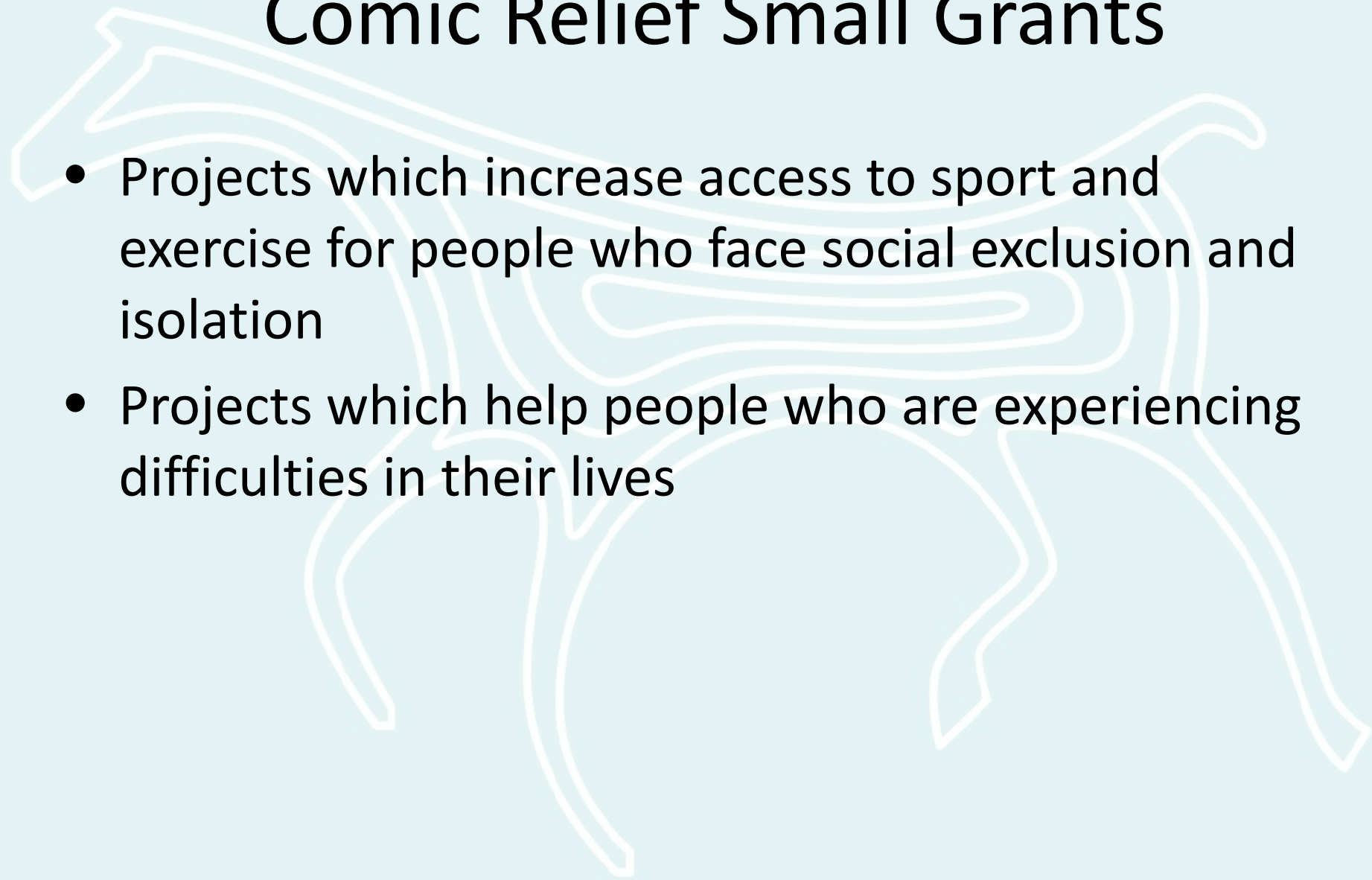
Public Health and Wellbeing Grants

To support projects which offer new or innovative approaches in one or more of the following areas:

- Reducing childhood obesity
- Helping adults to adopt healthier lifestyles
- Helping to combat loneliness, isolation
- Supporting older people to have more active and fulfilling lives
- Promoting the use of community green spaces, assets and infrastructure
- Reducing drug and alcohol abuse

Comic Relief Small Grants

- Projects which increase access to sport and exercise for people who face social exclusion and isolation
- Projects which help people who are experiencing difficulties in their lives



Police and Crime Commissioner Grants

Projects must projects which seek to bring communities together to tackle local issues

- Anti-social behaviour
- Crime in local neighbourhoods
- Drug and alcohol related crime
- Reducing re-offending
- Violence against women and girls
- Youth crime

Small Grants

- One off grants of up to £750
- Revenue or small pieces of equipment only
- Apply at any time. Decision usually within 6 weeks
- Circa £20,000 distributed per annum

Last year

- Increased our endowment by £1.1m and also raised £322k in flow through funding.
- We distributed £800k through Wiltshire and Swindon
- 548 grants were made, but more than 70% of these were paid to individuals

The future

www.wiltshirecf.org.uk



@WCFGrants



cfwiltswindon



Wiltshire Uncovered Report 2014